



# GMT MONTHLY MEMBERSHIP PROGRESS REPORT

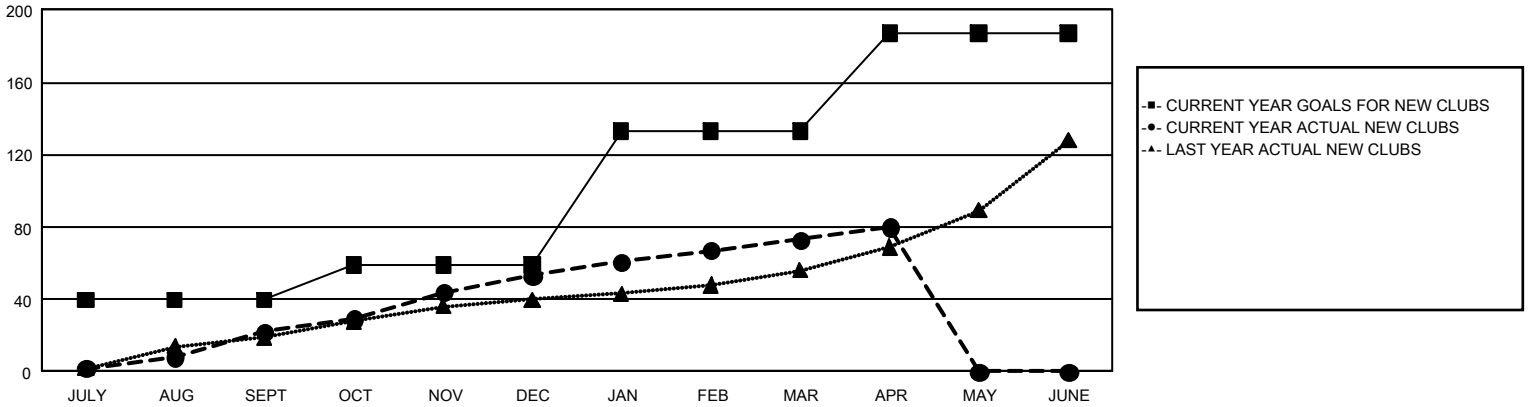
## GAT Constitutional Area 3

Results as of: 4/30/2024

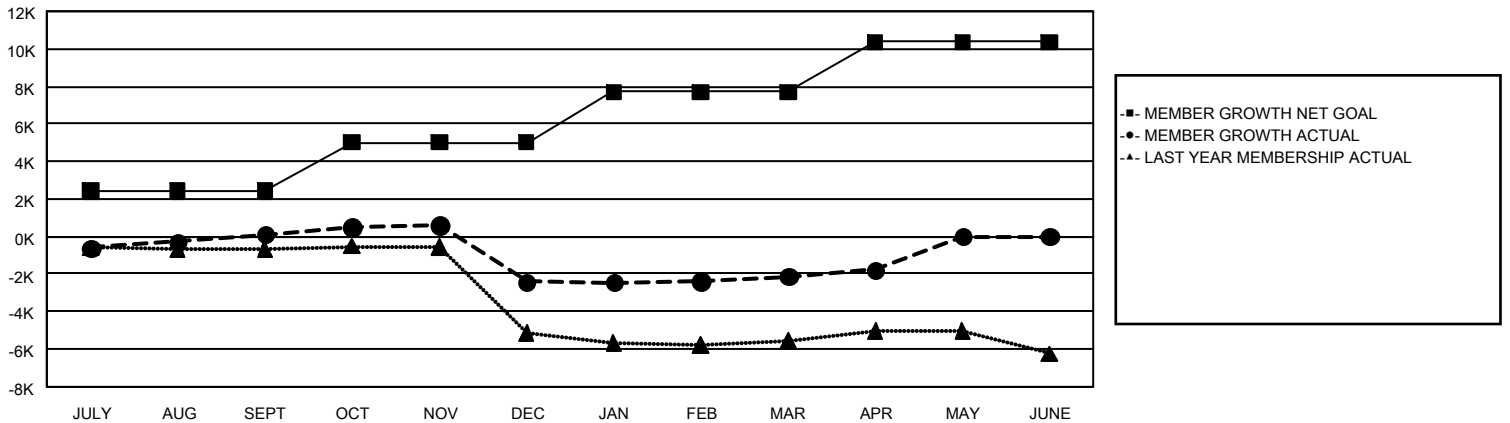
REPORT DOES NOT INCLUDE CLUBS IN UNDISTRICTED AREAS.

Clubs				Members			
RESULTS FOR 2023-2024				RESULTS FOR 2023-2024			
QUARTER	NEW CLUB GOAL	NEW CLUBS	DROPPED CLUBS	QUARTER	MEMBER GROWTH NET GOAL	MEMBER GROWTH ACTUAL	DROPPED MEMBERS ACTUAL (including transfers)
JULY/AUG/SEPT	40	22	38	JULY/AUG/SEPT	2,394	3,655	3,166
OCT/NOV/DEC	19	31	70	OCT/NOV/DEC	2,611	3,700	5,910
JAN/FEB/MAR	74	20	24	JAN/FEB/MAR	2,708	2,816	2,068
APR/MAY/JUNE	54	7	9	APR/MAY/JUNE	2,654	1,162	696

**GOALS AND ACTUAL NEW CLUBS CUMULATIVE**



**GOALS AND ACTUAL MEMBERS CUMULATIVE**



<b>DROPPED CLUBS: 140</b>	2,170 CLUBS OF 4,325 ADDED 1 OR MORE NEW MEMBERS	<b><u>GENDER DISTRIBUTION</u></b> MALE                    47,426 (46.87%) FEMALE                   53,702 (53.08%)
<b><u>DROPPED MEMBERS</u></b> DECEASED                    637 CLUB CANCELLED            1,419 OTHER                            9,783 <hr/> TOTAL                            11,839	<a href="#">CLICK HERE FOR CUMULATIVE MEMBERSHIP DATA</a>	TOTAL FAMILY UNIT MEMBERS                    37,762  FAMILY MEMBERS PAYING HALF DUES                    21,009